

BioinformatIQ

v3.0

proteomics connected.

Get connected.

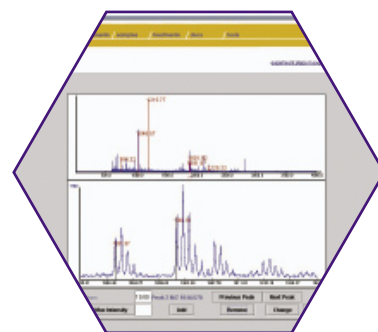
- instruments
- research
- data
- results
- laboratories
- collaborators



Informatic Solutions for Proteomics

- ◆ Web-based Solution
- ◆ Flexible Proteomic Workflows
- ◆ Complete Integration of Instrumentation
- ◆ Integrated Multivariate Statistical Analysis
- ◆ Support for 21 CFR Part 11 Compliance

Secure web-based solution allows secure, permission controlled access to data, facilitating research collaborations



Scalable from small to large proteomic research labs



Integrated data acquisition from your proteomic instruments configure for any mass spectrometer*

Automated analysis of mass spectra, protein identification and annotation of 2D reference maps

Advanced statistical and analytical tools to accelerate protein identification and biomarker discovery



proteomics connected.

Please contact us for more information

Proteome Systems Ltd
1/35-41 Waterloo Road
North Ryde NSW 2113
Australia
Tel: +61 2 9889 1830
Fax: +61 2 9889 1805

www.proteomesystems.com

* configuration or customization may be required

Proteome Systems Inc.
14 Gill Street
Woburn,
Massachusetts 01801
USA
Tel: +1-781-932-9477
Toll free: 866-779-7836
Fax: +1-781-932-9294

 **BioinformatIQ™**